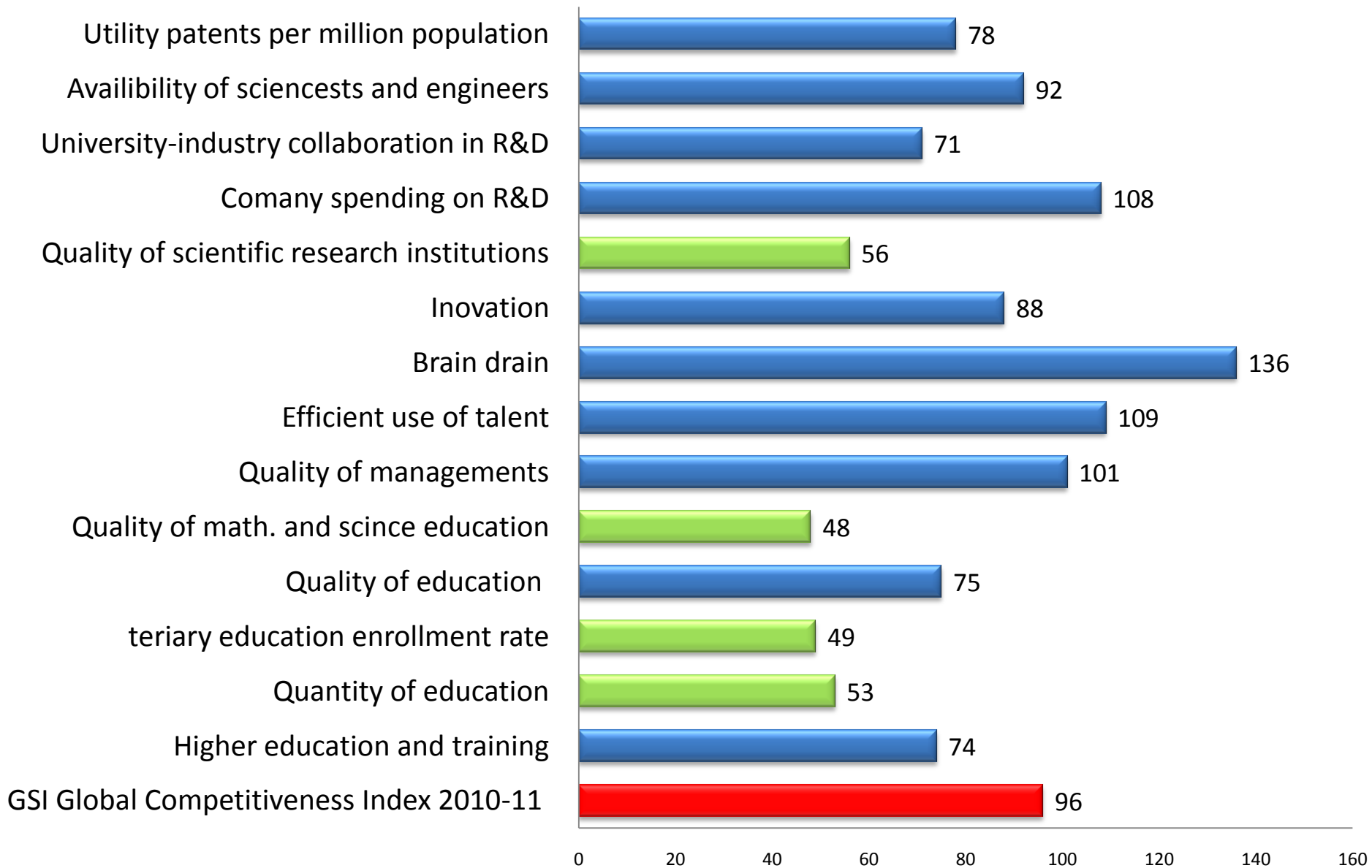


# **R&D in Serbia**

## **Facts and Figures**

**Vera Dondur**  
**National Council for Science and Technological  
Development**

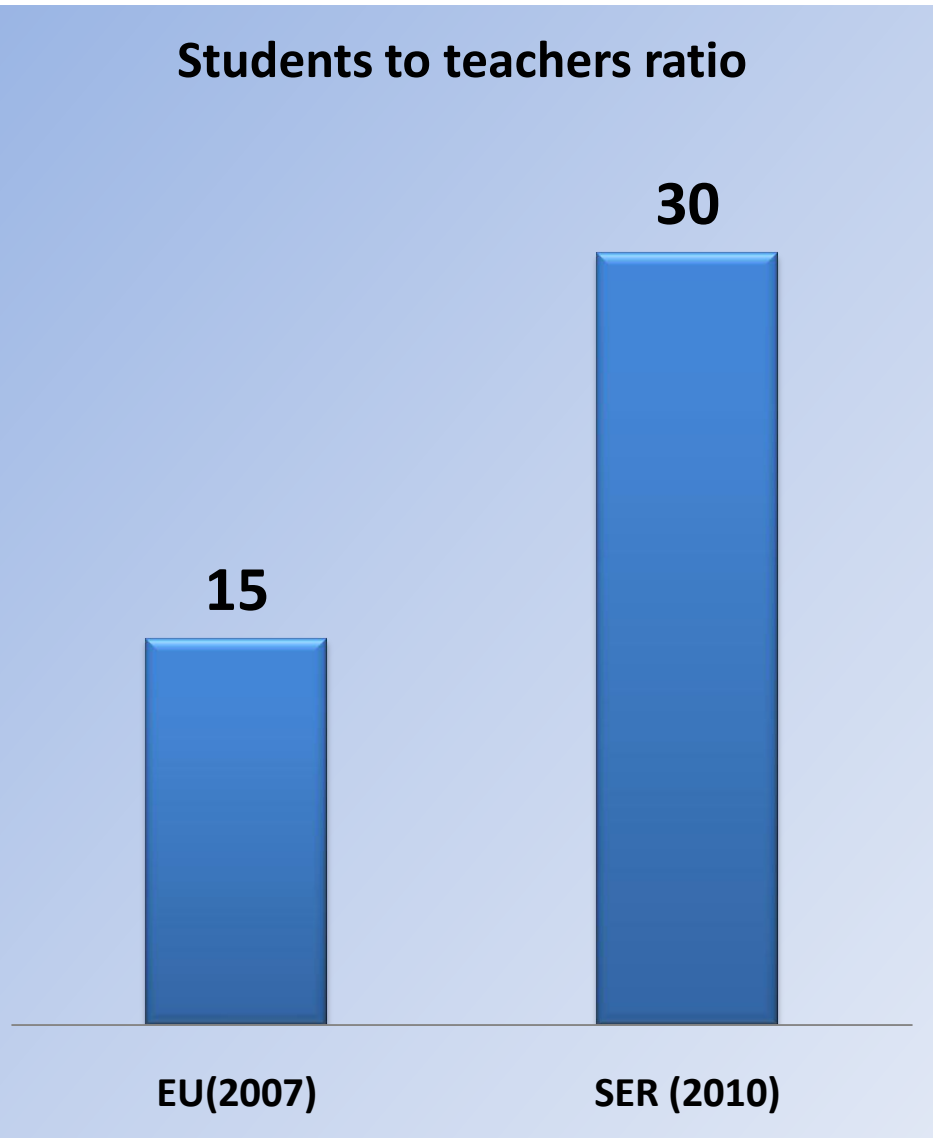
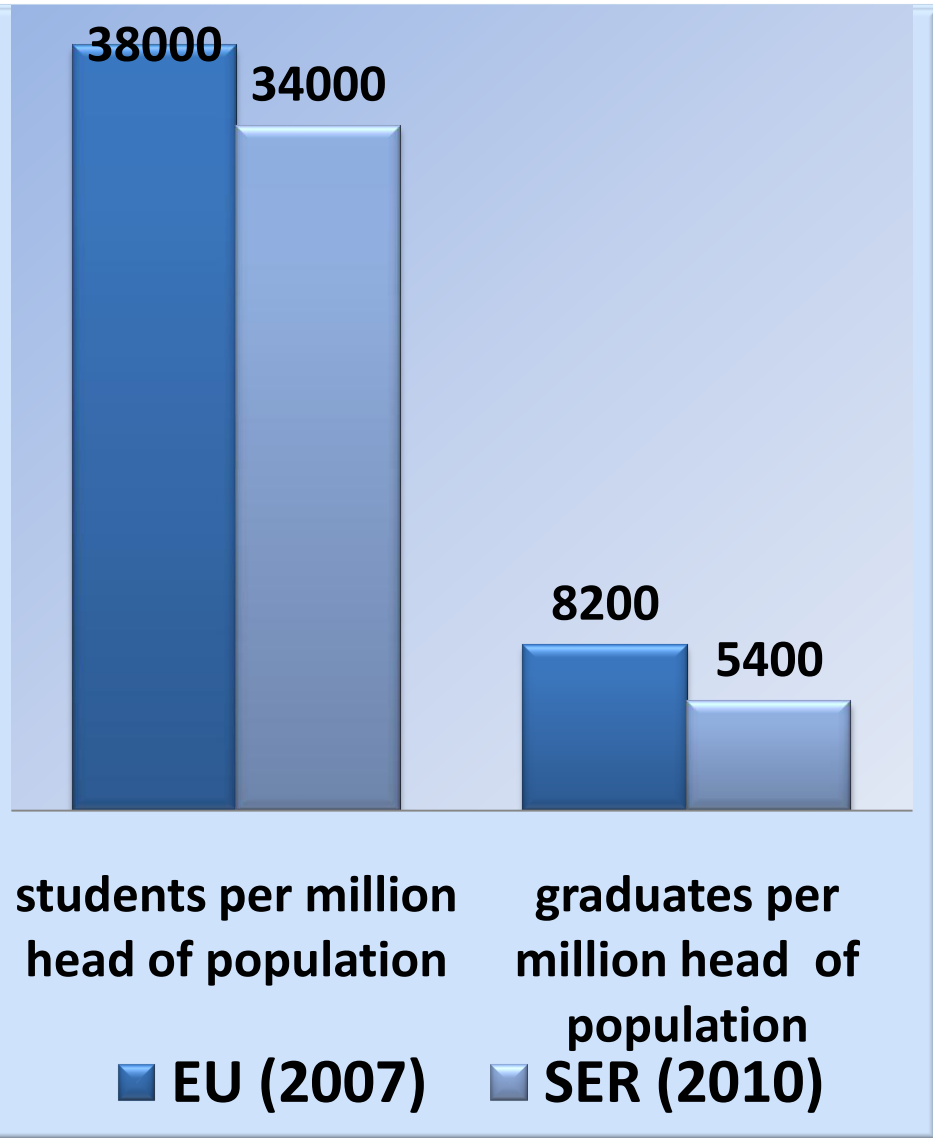
# Competitiveness Index 2010-11



➤ **Research carried out in higher education has direct bearing on the formation of our students.**

➤ **The students will be the primary engine for transferring the knowledge to the wider society, either by job-shaping and entrepreneurship or as innovators within their chosen careers.**

# Role and significance of doctoral education and training



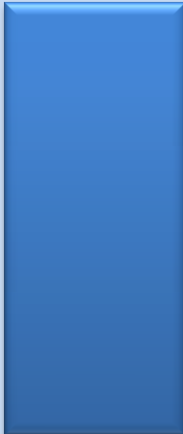
# Role and significance of doctoral education and training

### PhD students per milion head of population

1050



680



EU (2007)

SER(2010)

### Doctoral graduates per million head of population

390



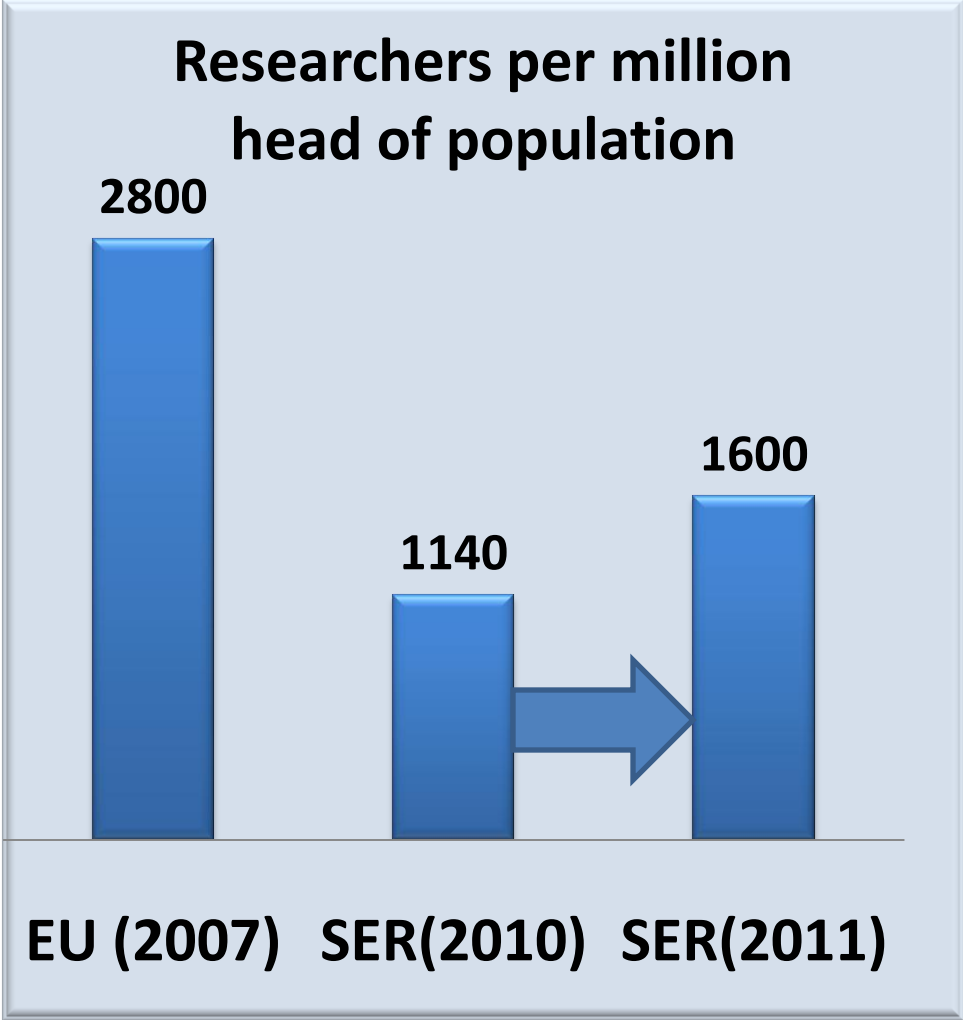
70



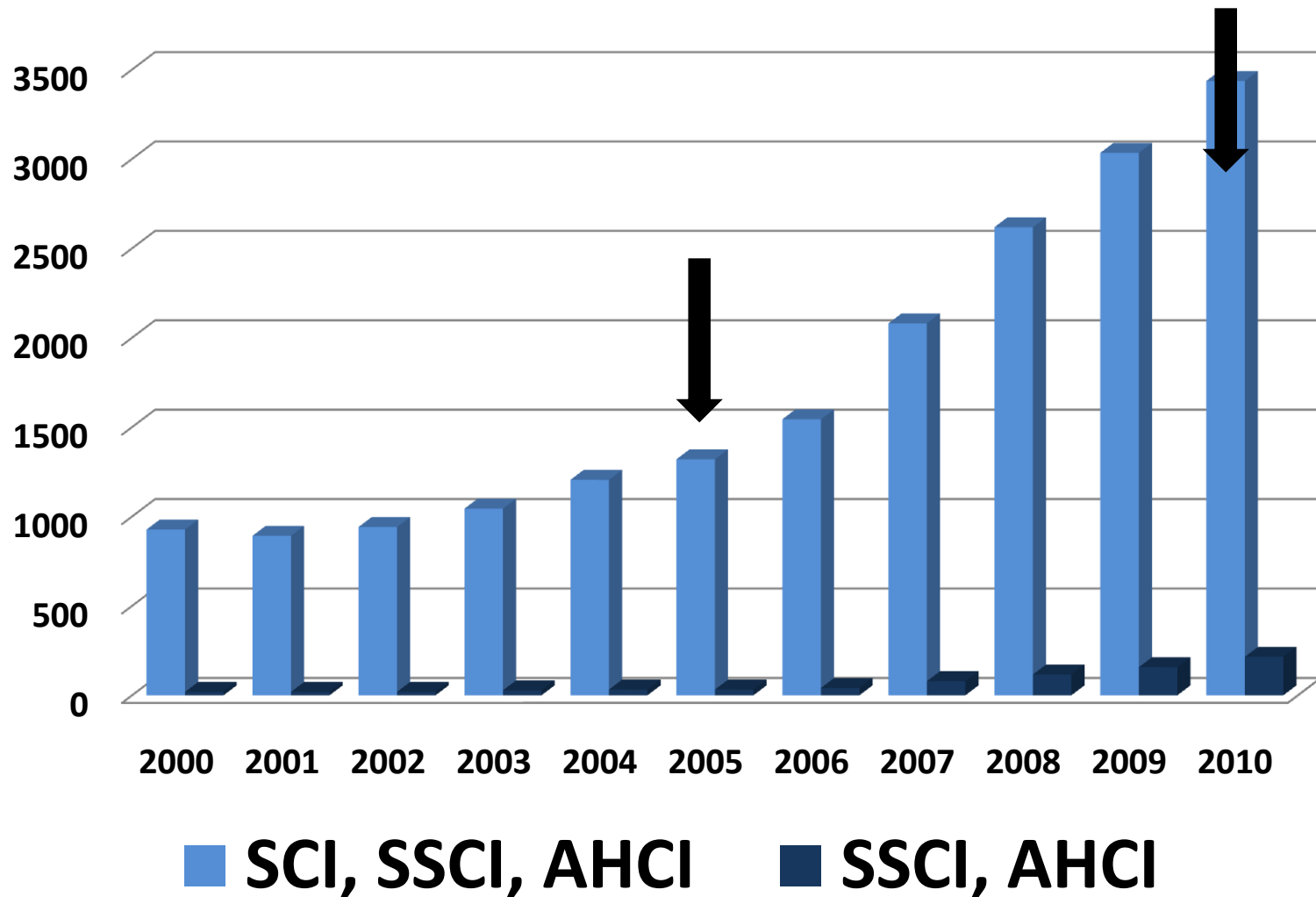
EU(2007)

SER(2010)

# Role and significance of doctoral education and training



The number of the papers published by Serbian researchers in internationally recognized journals between 2005 and 2010 shows significant increase.



- **Serbia has been an associated country within FP7 programme since 2007.**
- **The Strategy of Scientific and Technological Development of the Republic of Serbia 2010-2015 was developed to address the future needs of the country based on a set of observations at the time (2010).**
- **R&D in science, technology and engineering was seen as key to global economic growth.**

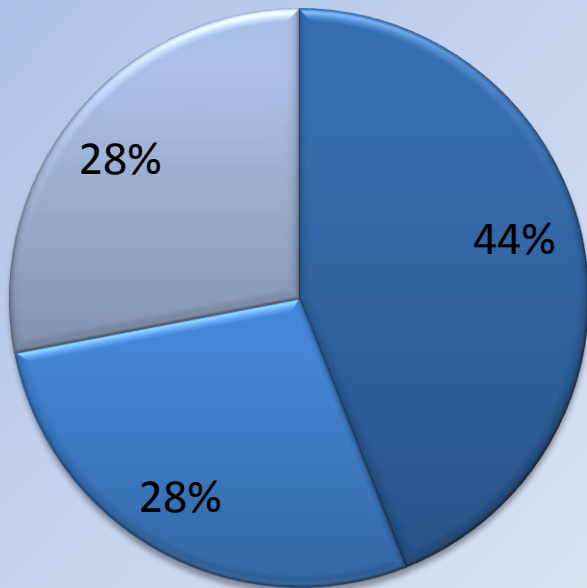


# **The national priorities in the field of science and technology:**

- Biomedicine and human health
- New materials and nanosciences
- Environment protection and countering climate change
- Agriculture and food
- Energy and energy efficiency
- Information and communication technologies
- Improvement of decision making processes and affirmation of national identity

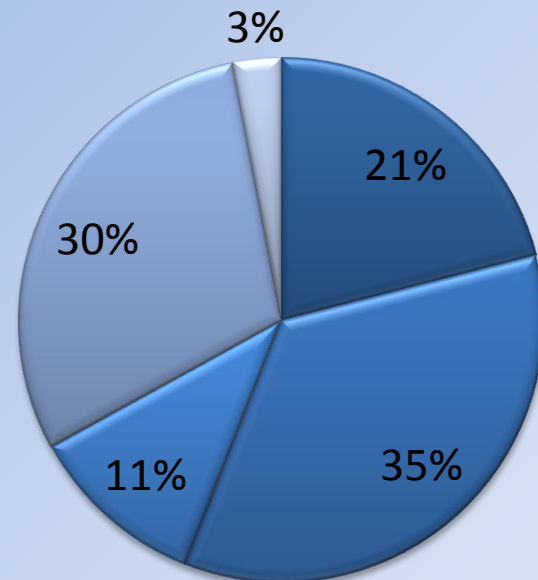
### researchers (2010-2014)

- Basic Sci.
- Interdiscip. Sci
- Tech.and Technol. Sci.



### PhD students (2010)

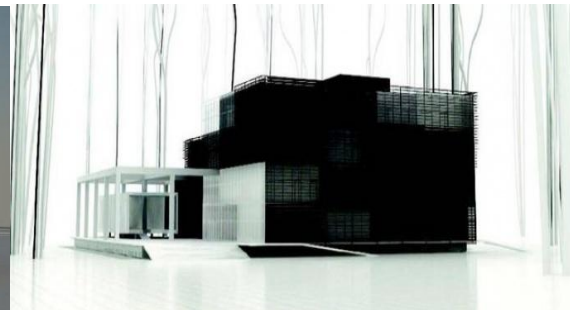
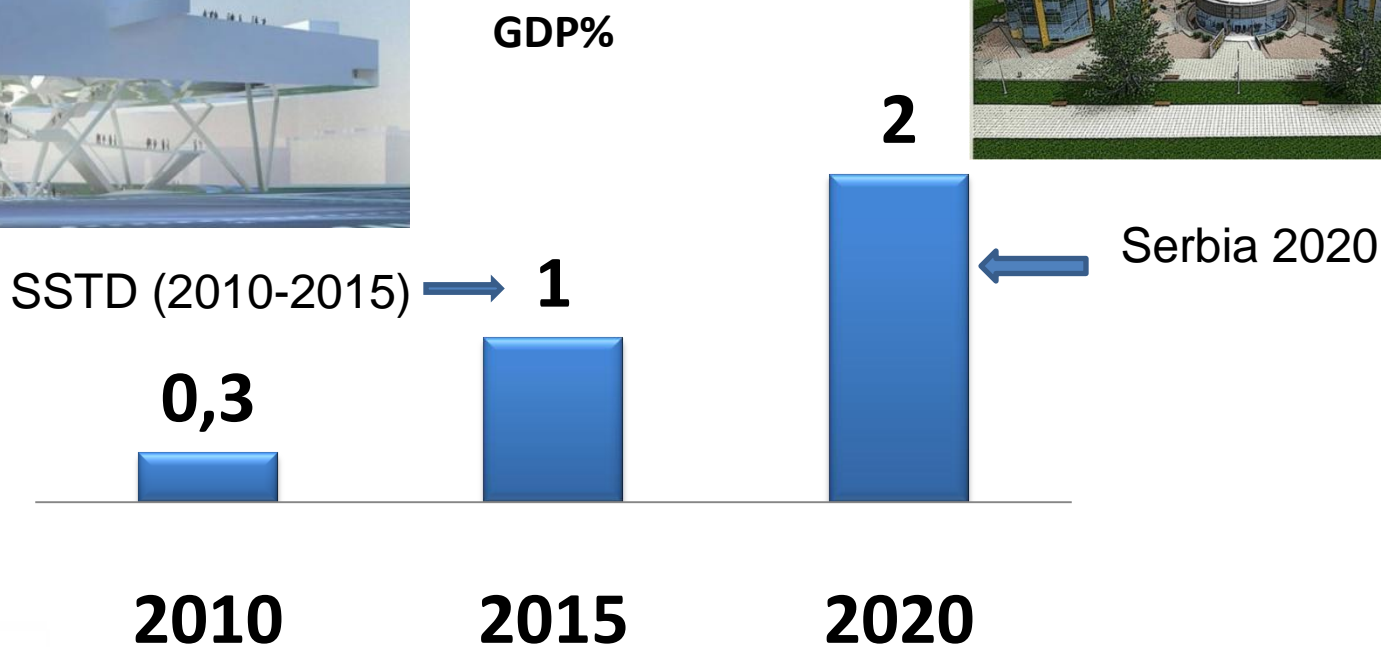
- Nat. Sci.
- Med. Sci.
- Art
- Tech. And Technol. Sci.
- Soc. Sci. And Hum.



**24 starting grants for young researchers**

# Founding for research

Serbia increased its R&D budget by 22% in 2011.



# **Investments:**

## **Capital Equipment for Research**

**Estimated value of equipment**  
**55x 10<sup>6</sup> EUR**

**Completion period June 2011-January 2012.**

# **Infrastructural Investments:**

- **Centres for the promotion of science, Belgrade, Svilajnac**
- **Nano Centre, Belgrade**
- **Stem cell centre , Kragujevac**
- **The main building University of Novi Sad**
- **Science and technology parks:  
Zvezdara, Kragujevac, Novi Sad, Niš**
- **Appartments for scientists:  
Belgrade, Kragujevac, Niš , Novi Sad**

## Appendix:

НИО		M21	M22	M23	број истр.	SCI- фактор	P фактор
1.	Универзитет у Београду - Факултет за физичку хемију	193	73	141	54	43,185	7,537
	Математички институт САНУ	183	109	160	62	40,145	7,290
	Институт техничких наука Српске академије наука и уметности	90	36	53	27	39,222	6,630
	Универзитет у Београду - Институт за физику	565	117	222	162	35,623	5,580
	Универзитет у Крагујевцу - Медицински факултет	67	43	105	31	34,387	6,935
6-10	Универзитет у Београду - Хемијски факултет	189	81	238	87	30,241	5,839
	Институт за мултидисциплинарна истраживања	188	68	125	76	29,197	5,013
	Астрономска опсерваторија	87	30	28	32	29,063	4,531
	Универзитет у Београду - Технолошко-металуршки факултет	340	135	326	151	28,960	5,305
	Универзитет у Београду - Физички факултет	215	77	54	80	28,338	4,325
11-15	Универзитет у Крагујевцу-Природно-математички факултет	241	137	242	122	27,369	5,082
	Универзитет у Новом Саду- Медицински факултет	64	64	191	52	27,019	6,135
	Универзитет у Београду - Институт за нуклеарне науке Винча	1027	323	477	424	26,561	4,309
	Универзитет у Нишу - Природно-математички факултет	176	129	228	104	26,317	5,125
	Универзитет у Београду - Стоматолошки факултет	76	43	59	38	26,316	4,684
16-20	Универзитет у Београду - Институт за хемију, технологију и металургију	310	95	312	160	24,319	4,481
	Универзитет у Београду - Биолошки факултет	139	97	302	113	22,150	4,761
	Институт за онкологију и радиологију Србије	61	38	75	42	21,500	4,143
	Универзитет у Београду - Технички факултет у Бору	49	42	69	39	20,744	4,103
	Универзитет у Нишу -Медицински факултет	100	72	236	99	18,869	4,121
21-25	Универзитет у Београду - Електротехнички факултет	166	117	171	130	18,662	3,492
	Универзитет у Београду - Фармацеутски факултет	156	88	257	132	18,629	3,795
	Универзитет у Београду - Медицински факултет	552	390	809	484	18,167	3,618
	Универзитет у Београду - Институт за медицинска истраживања	85	61	94	76	16,676	3,158
	Универзитет у Новом Саду - Природно-математички факултет	280	174	388	257	16,630	3,276